

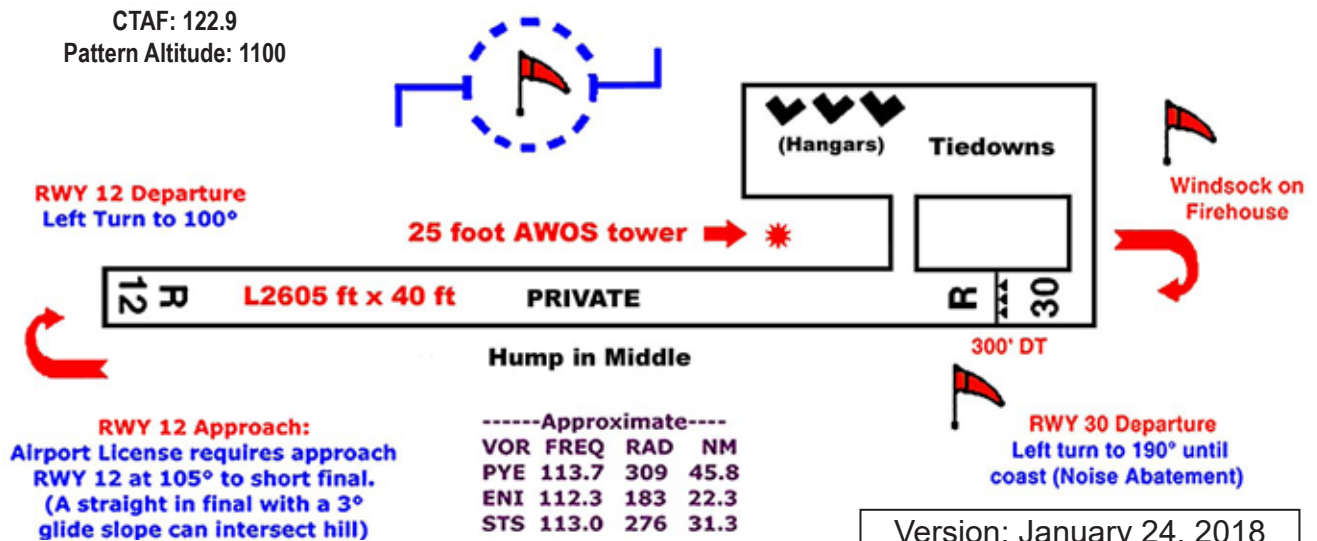
The Sea Ranch Association Airstrip Briefing

This *PRIVATE AIRSTRIP* is for the use of Sea Ranch Association members, their invites, and their renters. Parked aircraft **MUST** display a valid Sea Ranch owner's decal, or a valid personal ID card, or a valid Sea Ranch vehicle hang tag clearly visible to Sea Ranch security personnel. Association members and rental agencies must provide this ID to their pilot invitees. Note that car transportation services such as taxis or private drivers (available through smartphone applications) are very limited in this coastal area and may not be available.

CA51 (38° 42.2'N, 123° 25.8'W) Elev: 360 ft. Runways: 30/12 Pattern Altitude: 1100 ft.

- Runway:
 - 2600 ft. by 40 ft. Runway has a 300 ft. displaced threshold
 - Runway has **Hump in middle** - prevents seeing traffic or deer at end
 - Turkeys and deer are frequently on or near the runways
 - A 25 foot AWOS Tower is near the main windsock
- Approach:
 - On gusty days expect wind shear, turbulence & loss of lift on short final
 - No Straight-ins – No Base entries. Announce all intentions on 122.9
 - **Runway 30 approach:** Enter right upwind at midfield. Check for deer, turkeys, or people on runway then right crosswind to right downwind to right base to final.
 - **Runway 12 approach:** Airstrip license specifies that approach to Runway 12 be "...angled 15° westerly of runway..." i.e. from Pool and Tennis Courts (1 mile up the coast from Runway 12), turn to 105 and proceed to Runway 12.
 - Arrivals Always use right traffic. Departures Always use left traffic.
- Other
 - No operations between local sunset and sunrise - No touch and goes
 - Uncertified AWOS info available at 707-785-9999 or by 5 clicks on 122.9

Use Airstrip, AWOS Data and Facilities at your own Risk



Version: January 24, 2018