



# THE SEA RANCH AUDIO WALKING TOUR: ARCHITECTURE, LANDSCAPE, INTENTIONS

## SEGMENT A

Sea Walk Drive, Sea Ranch Lodge, Bihler Point  
and views of Condominium One

Begin this walk at the main entry doors to the Sea Ranch Lodge.



*A The Sea Ranch Lodge entry*

[Go to Photo A1](#)



**A1** *The Sea Ranch Store with Logo*

[Previous Photo](#)

[Go to Photo A2](#)





**A2** *Sea Walk Drive Hedgerows*

[Previous Photo](#)

[Go to Photo A3](#)



**A3** *View uphill from tree near Highway 1*

[Previous Photo](#)

[Go to Photo A4H](#)





**A4H** Aerial view of Bihler Point, Condominium One, the Sea Ranch Store and Marker Building (date circa 1967)  
Photo by Lisa Trumpler

[Previous Photo](#)

[Go to Photo A5](#)



**A5** *Sea Walk Meadow*

[Previous Photo](#)

[Go to Photo A6](#)





**A6** *Sea Ranch Lodge entry porch and extension*

[Previous Photo](#)

[Go to Photo A7](#)



**A7** *Sea Ranch Lodge bedroom wings*

[Previous Photo](#)

[Go to Photo A8](#)





**A8** *Passage through Lodge court wall*

[Previous Photo](#)

[Go to Photo A9](#)



**A9** *Condominium One from the north (Bihler Point)*

[Previous Photo](#)

[Go to Photo A10H](#)





**A10H** Condominium One entry and meeting court

©Jim Alinder

[Previous Photo](#)

[Go to Photo A11H](#)



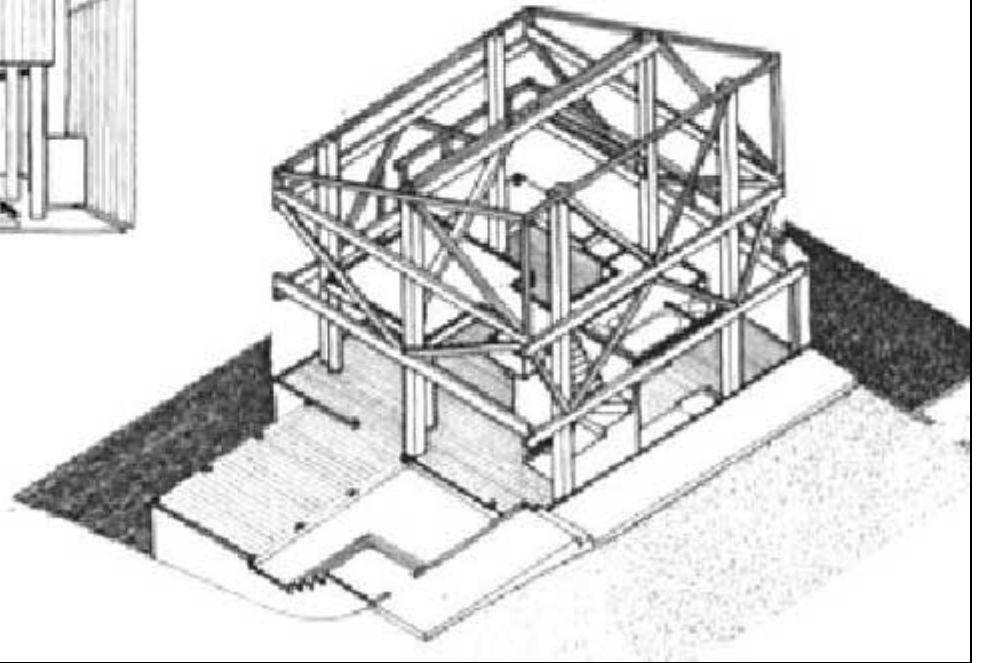
**A11H** *South face of Condominium One*

©Jim Alinder

[Previous Photo](#)

[Go to Photo A12H](#)





**A12H** *Condominium One framing and interior drawings*

[Previous Photo](#)

[Go to Photo A13H](#)



**A13H** *Condominium One from north, showing car court and tower*

[Previous Photo](#)

[Go to Photo A14H](#)





**A14** *Ocean face of the Sea Ranch Lodge*

[Previous Photo](#)

---