

The Sea Ranch Association Airstrip Briefing

(CA51) N38°42.2 W123°25.8

This PRIVATE AIRSTRIP is for the use of Sea Ranch Association members and guests

RWY 12-30 H2600X40 (ASPH), unlighted.

CAUTION:

1. RWY 12-30 has a hump midfield preventing full view of the entire runway length when on the ground.
2. Turkeys and deer are frequently on or near runways.
3. During high wind and gusty conditions expect turbulence, and possible wind shear with associated loss of lift.

Airport Remarks:

1. CTAF 122.9. No operations from sunset to sunrise. No touch & go operations.
2. Not permitted for public use. PPR required for all aircraft/pilots.
3. Only operations in Visual Meteorological Conditions (VMC) are permitted to/from the airport. There are no published instrument procedures at the airport.
4. Aircraft having a published accelerate-stop distance performance chart are prohibited from takeoff if the calculated distance for current conditions and aircraft loading exceeds 2300'.
5. Aircraft with a certified maximum takeoff weight greater than 8,500 pounds are prohibited.
6. No fueling services.
7. Field elevation: 360' MSL. Traffic Pattern Altitude: 1160' MSL (800' AGL).
8. Wx cams at <https://webcamWX.com>
9. A 25' weather tower is near the airport windsock.
10. The area is noise sensitive. Pilots are asked to select airspeeds, power settings and bank angles as much as safely possible to mitigate noise.
11. Obtain a complete set of airstrip rules in 7.2 by contacting the association office (707-785-2444) or by accessing the member online association website.

RWY 12 approach: Airplane

1. Right traffic.
2. Turn final early from the base leg to 105° due to terrain encroaching on the 3° approach angle.

RWY 30 approach: Airplane

1. Right traffic.
2. Note RWY 30 has a 300' displaced threshold.

RWY 12 departure: Airplane

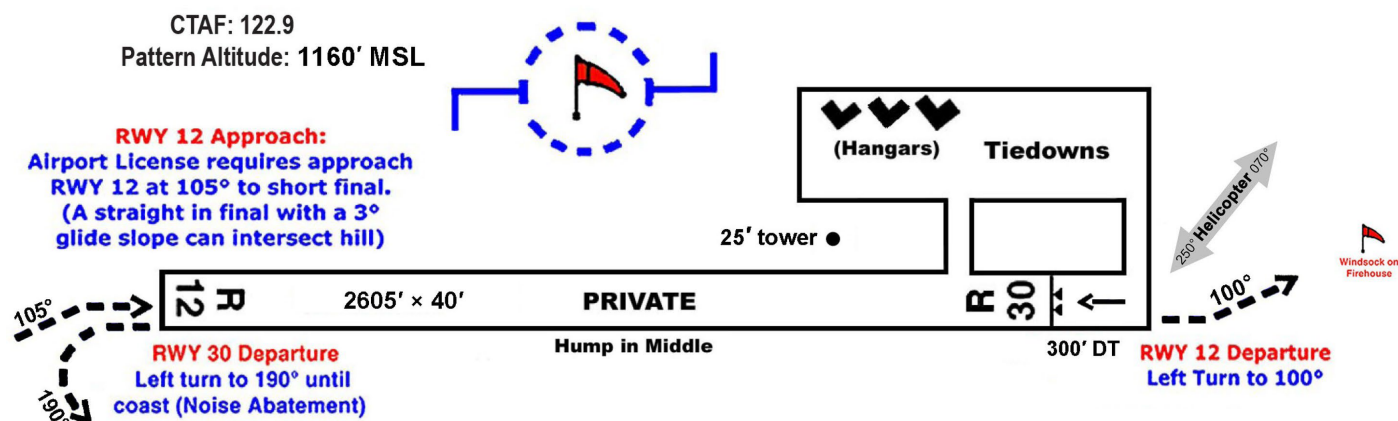
1. After takeoff, when able turn left to 100°.

RWY 30 departure: Airplane

1. After takeoff, when able turn left to 190° to the coastline, then proceed on course.

Helicopter Operations

1. When conditions allow, helicopter pilots are requested to use RWY 30 for landing and RWY 12 for departure with Annapolis Road to the Southeast of the airstrip as a preferred route. This routing minimizes the noise impact on the local community.
2. When the pilot deems it unsafe to use RWY 30 landing/RWY 12 departure, the airplane procedures for RWY 30 departure and RWY 12 approach should be followed.
3. Except for emergency helicopter operations, ground run times shall be kept to less than 5 minutes.



Note that ground transportation services such as taxis or private drivers (available through smartphone applications) are very limited in this coastal area and may not be available. Please report unusual or unsafe conditions to TSRA Security at 707-785-2701.

Rwy 12 VFR visibility estimate aid

Distance measured from
edge of pavement at
approach end of rwy 12

.94 mile

* * * *



Rwy 30 VFR visibility estimate aid

Distance measured from edge
of pavement at approach end
of rwy 30

* 1.01 mile
* .82 mile
* .65 mile
* .39 mile

